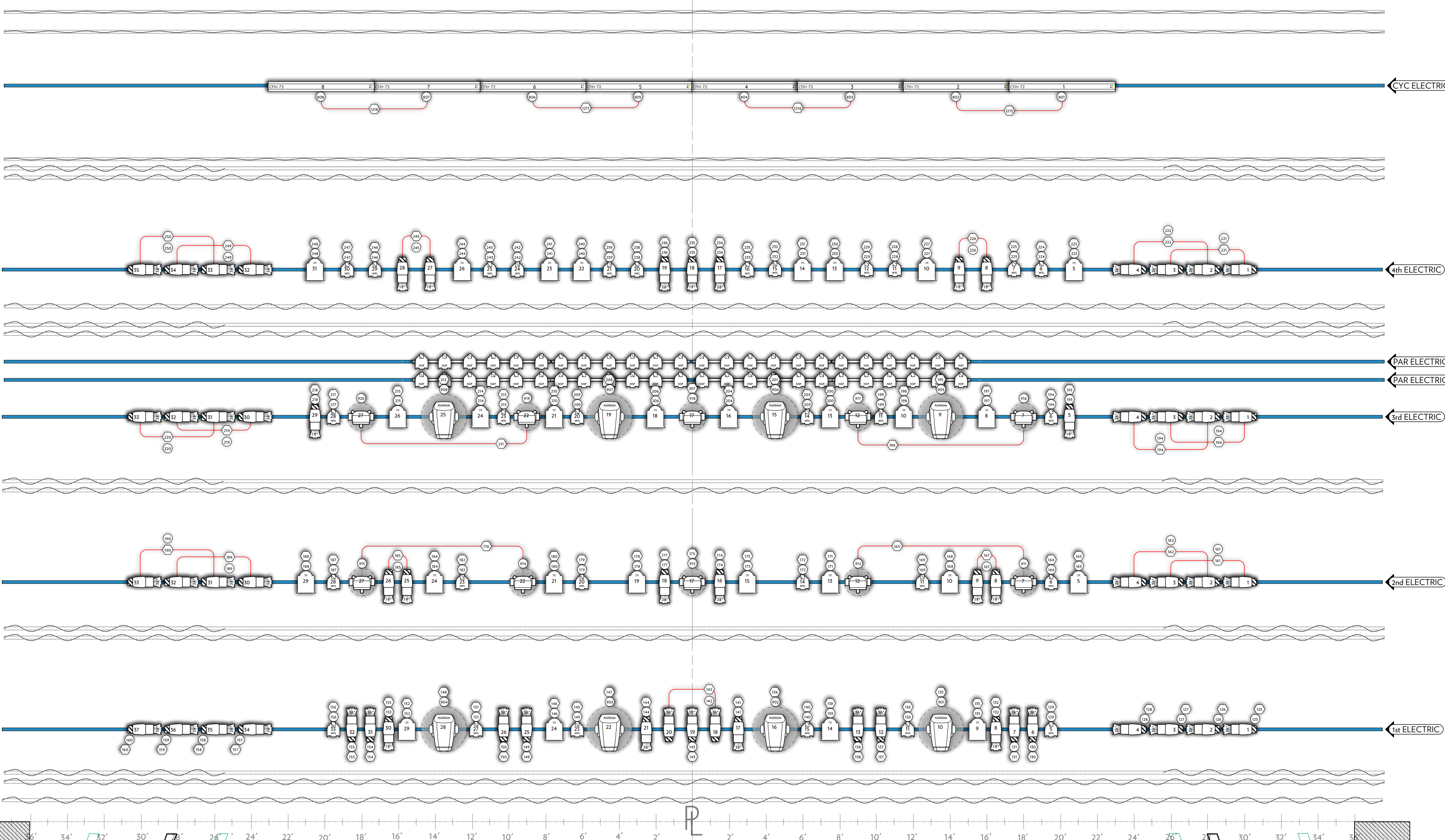


Organ / Orch Shell Storage

Det.	Note	Item	No.
51'0"	X-over Lights - Working Set	98	
51'0"	Future	98	
50'6"	MOTOR - 3rd Ceiling - Storage	97	
50'0"	Future	96	
49'6"	Future	95	
49'0"	Projection Screen Storage	94	
48'6"	Future	93	
48'0"	MOTOR - 2nd Ceiling - Storage	92	
47'6"	Future	91	
47'0"	Future	90	
46'6"	Future	89	
46'0"	MOTOR - 1st Ceiling - Storage	88	
45'6"	Missing Set - Obstructed	87	
45'0"	Future	86	
44'6"	Black Drop - No Fullness	85	
44'0"	Future	84	
43'6"	CYC - White Filled Scrim	83	
43'0"	Future	82	
42'6"	(Translucent Storage)	81	
42'0"	Future	80	
41'6"	Future	79	
41'0"	Future	78	
40'6"	Future	77	
40'0"	Cyc Electric	76	
39'6"	Future	75	
39'0"	Translucent Drop	74	
38'6"	Missing Set - Obstructed	73	
38'0"	5th Border (Spare)	72	
37'6"	5th Legs (Spare)	71	
37'0"	Black Scrim	70	
36'6"	#4 Legs	69	
36'0"	#4 Border	68	
35'6"	Future	67	
35'0"	Future	66	
34'6"	MOTOR - 3rd Orchestra Ceiling	65	
34'0"	Future	64	
33'6"	Future	63	
33'0"	Future	62	
32'6"	Future	61	
32'0"	Future	60	
31'6"	Future	59	
31'0"	Future	58	
30'6"	Future	57	
30'0"	4th Electric	56	
29'6"	Missing Set - Obstructed	55	
29'0"	Black Out W/ Fullness	54	
28'6"	Future	53	
28'0"	Future	52	
27'6"	#3 Legs	51	
27'0"	#3 Border	50	
26'6"	Future	49	
26'0"	Future	48	
25'6"	Future	47	
25'0"	PAR Bars 2	46	
24'6"	Future	45	
24'0"	PAR Bars 1	44	
23'6"	Future	43	
23'0"	Future	42	
22'6"	Future	41	
22'0"	3rd Electric	40	
21'6"	Missing Set - Obstructed	39	
21'0"	Future	38	
20'6"	Future	37	
20'0"	MOTOR - 2nd Orchestra Ceiling	36	
19'6"	Future	35	
19'0"	Future	34	
18'6"	#2 Legs	33	
18'0"	#2 Border	32	
17'6"	Future	31	
17'0"	Future	30	
16'6"	Future	29	
16'0"	Future	28	
15'6"	Future	27	
15'0"	Future	26	
14'6"	Future	25	
14'0"	Missing Set - Obstructed	24	
13'6"	Future	23	
13'0"	2nd Electric	22	
12'6"	Future	21	
12'0"	Future	20	
11'6"	Future	19	
11'0"	#1 Legs SR	18	
10'6"	#1 Legs SL	17	
10'0"	#1 Border	16	
9'6"	Future	15	
9'0"	Future	14	
8'6"	Future	13	
8'0"	Future	12	
7'6"	Future	11	
7'0"	MOTOR - 1st Orchestra Ceiling	10	
6'6"	Future	9	
6'0"	Missing Set - Obstructed	8	
5'6"	1st Electric	7	
5'0"	Future	6	
4'6"	Future	5	
4'0"	Future	4	
3'6"	Future	3	
3'0"	Future	2	
2'6"	Future	1	
2'0"	MOTOR - House Curtain	0	
1'6"	Future		
1'0"	Future		
0'6"	Future		
0'0"	Future		



FIXTURE KEY

- ETC SOURCE 4 5" 750w
- ETC SOURCE 4 10" 750w
- ETC SOURCE 4 14" 750w
- ETC SOURCE 4 19" 750w
- ETC SOURCE 4 26" 750w
- ETC SOURCE 4 36" 750w
- ETC SOURCE 4 PAR (WFL) 750w
- STRAND 8" FRESNEL 2000w
- CHROMAQ COLOR FORCE II+ 800w
- HES HALCYON PLATINUM ULTRA-BRIGHT 1200w
- GLP IMPRESSION XS 710w

GENERAL NOTES

1. "Rock-n-Roll" PAR bar lighting on demand ONLY. Please request during technical advance. Does not exist as part of rep plot.

REVISION HISTORY

NO.	REVISION	DATE	BY
1	CREATED	9/11/25	TS
2	MOVERS & LINE ARRAY ADDED	9/2/25	SS



OVERTURE HALL

OVERTURE CENTER FOR THE ARTS
MADISON, WI